



R BASICS & BEYOND

INTRODUCTION TO DATA ANALYSIS WITH R

A 12-week Live Cohort Course



TABLE OF CONTENTS

The Learning Journey

Our Training Offer

Key Objectives of the Course

Module 1: R Foundations

Module 2: R Data Wrangling with dplyr

Module 3: R Data Visualisation with ggplot2

Weekly Course Schedule

Why Graph Courses

Who We Are

Our Mentors and Creators

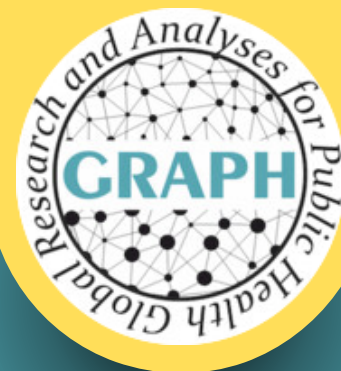
Our Partners



The GRAPH Courses

www.thegraphcourses.org

THE LEARNING JOURNEY



FROM NOVICE TO PROFICIENT ANALYST

FOUNDATIONS

Learn the basics of R, RStudio, and data exploration.



DATA WRANGLING

Manipulate data with the dplyr package.



DATA VIZ

Master ggplot2, the most popular data visualization package in R



FINAL PROJECT

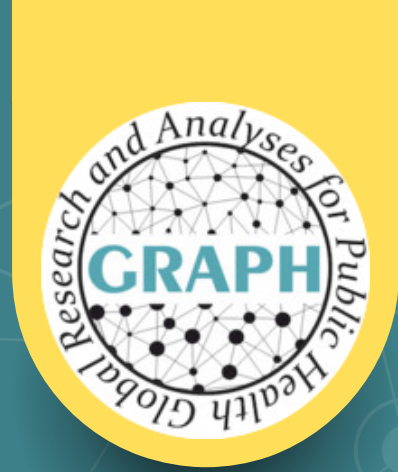
Build a capstone project for your portfolio, and receive a shareable certificate



R Basics & Beyond Unlock the Power of Data Analysis

Become a part of a guided cohort in the course "R Basics and Beyond. An Introduction to Data Analysis with R". This 12-week learning journey will help you build strong foundations in the R programming language and experience real data analysis and reporting. Keep a steady flow with weekly live classes and study halls, get personalized help, and become a part of a community of like-minded professionals.





OUR TRAINING OFFER

R BASICS & BEYOND

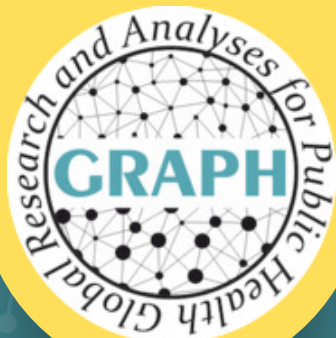
INTRODUCTION TO DATA ANALYSIS WITH R

A 3-MONTH GUIDED COURSE

Included in the course:

- Structured study plan
- Weekly live workshops
- Real-life data exercises
- Live study sessions in dedicated study halls
- Private community forums
- Personalized feedback
- Sharable certificate





KEY OBJECTIVES OF THE COURSE



Master the RStudio IDE, practice with RMarkdown, data visualisation with ggplot2 and data wrangling



Meet like-minded people with interest in data analysis oriented career paths



Develop an in-depth understanding of the principles of data analysis and its use in professional and academic environments



Create a project portfolio demonstrating advanced practical skills in data analysis



Gain hands-on experience with real world data sets



Become a member of the next generation of data scientists who are using data-driven insights to shape the future



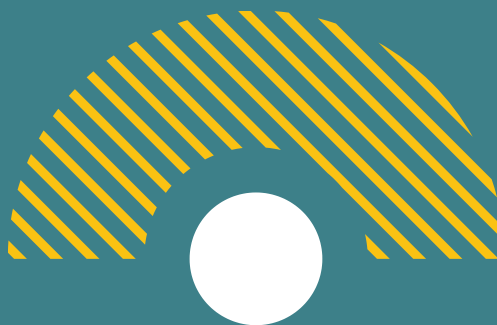
MODULE 1

R FOUNDATIONS

This module will take you through the essential elements of RStudio and the R programming language, laying foundations for the data manipulation and visualization modules.

Topics Covered:

1. Installing R and RStudio
2. The RStudio Integrated Development Environment
3. Coding basics
4. Creating projects in RStudio
5. R Markdown
6. Data classes and structures
7. Subsetting data in R
8. Debugging and getting help



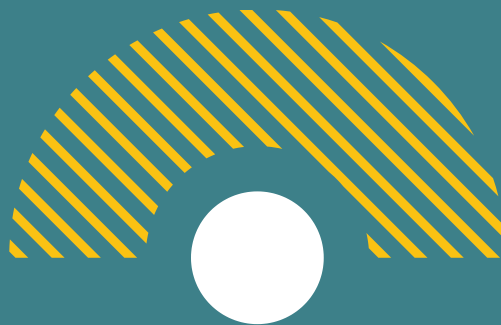
MODULE 2

DATA WRANGLING WITH DPLYR

In this module you will learn how to effectively manipulate data using dplyr package. You will understand how to filter, mutate, group and summarize your data to extract key insights and prepare data for downstream analysis.

Topics Covered:

1. Selecting and renaming
2. Filtering data
3. Mutating
4. Conditional mutating
5. Grouped summaries
6. Grouped filters
7. Pivoting data



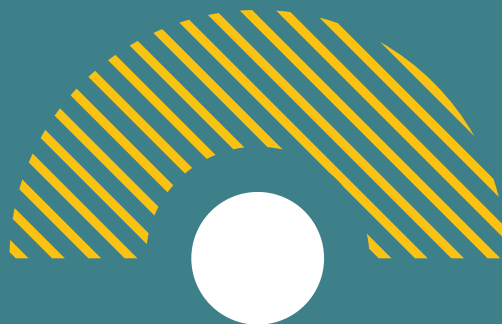
MODULE 3

DATA VISUALIZATION WITH GGPLOT2

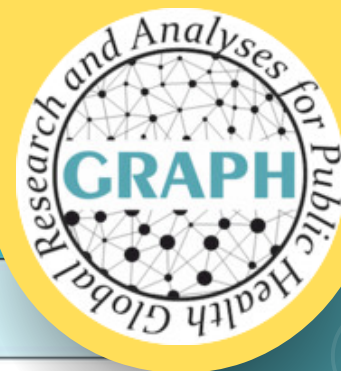
In this module you will master the most popular data visualization package in R, learning how to create stunning visualizations of your data using ggplot2.

Topics Covered:

1. Fundamentals of creating plots with ggplot2
2. Visualization strategies for univariate, bivariate, and multivariate data
3. Scatterplots and line graphs for visualizing relationships
4. Histograms and boxplots for visualizing distributions
5. Simple, stacked, and grouped barplots
6. Time series plots
7. Customizing labels, color palettes, themes, and more



COURSE SCHEDULE



Week	Pework	Workshop
1	<ul style="list-style-type: none"> • Install R & RSudio • Install and set up Cosmos 	<ul style="list-style-type: none"> • Orientation
2	<ul style="list-style-type: none"> • How to use RStudio • R coding basics 	<ul style="list-style-type: none"> • Catching R errors
3	<ul style="list-style-type: none"> • Data dive: Ebola in Sierra Leone • How to use RStudio projects 	<ul style="list-style-type: none"> • Public health panorama: exploring datasets across continents
4	<ul style="list-style-type: none"> • Intro to Rmarkdown • Getting help from StackOverflow & ChatGPT 	<ul style="list-style-type: none"> • Rmarkdown practice: building your first data report
5	<ul style="list-style-type: none"> • How to use pipes • Selecting & renaming columns 	<ul style="list-style-type: none"> • Extracting and exporting data subsets: rabies KAP survey from Pakistan
6	<ul style="list-style-type: none"> • Filtering rows • Mutating values 	<ul style="list-style-type: none"> • Transforming and visualizing data: insights into Melanesian diets and lifestyles
7	<ul style="list-style-type: none"> • Conditional mutating, case_when • Group by & summarize 	<ul style="list-style-type: none"> • Grouping, summarizing and plotting data: TB treatments and costs in India
8	<ul style="list-style-type: none"> • Other grouped operations • Pivoting datasets 	<ul style="list-style-type: none"> • Data pivoting practice: dietary diversity in Vietnam
9	<ul style="list-style-type: none"> • Intro to ggplot2 • Scatterplots & Smoothing 	<ul style="list-style-type: none"> • Practicing ggplot2: plotting global HIV prevalence and incidents
10	<ul style="list-style-type: none"> • Lines, scales, labels • Histograms 	<ul style="list-style-type: none"> • Lines, scales, labels, and themes: plotting data from COVID-19 in Switzerland
11	<ul style="list-style-type: none"> • Boxplots • Barplots 	<ul style="list-style-type: none"> • Histograms, boxplots & barplots: GI diseases in Mali • Intro to final project.
12	–	Final project work time (optional attendance)





GRAPH

WHY GRAPH COURSES?

At GRAPH Courses, we're committed to making high-quality data science education accessible and impactful. **Based at the University of Geneva, Switzerland**, our program combines academic rigor with practical, industry-relevant skills.

Our bootcamp-style approach ensures an immersive learning experience. You'll gain **technical skills and develop a portfolio of real-world projects**, setting you apart in the job market.

What sets us apart is our **supportive learning ecosystem**. With live workshops, personalized code reviews, and a global community of peers, you're never alone. Our experienced instructors and mentors are dedicated to your success.

As a **non-profit backed by academic institutions**, we offer this comprehensive bootcamp at an affordable price without compromising on quality. Choose GRAPH Courses to invest in a transformative experience that will equip you with the skills and confidence to thrive in the data-driven world.



The GRAPH Courses

www.thegraphcourses.org



GRAPH

INSTRUCTORS & MENTORS



Prof. Olivia Keiser
GRAPH Network
Director
Head of the Infectious
Diseases & Mathematical
Modelling Division,
University of Geneva



Kene Nwosu
GRAPH Instructor
PhD student in global health &
epidemiology,
University of Geneva



**Prof. Flavio
Coelho**
EpiGraphHub Leader
Associate professor of
Mathematical Epidemiology
Getulio Vargas Foundation,
Rio de Janeiro



Joy Vaz
GRAPH Instructor
R Developer, Health Data Analyst
University of Georgia



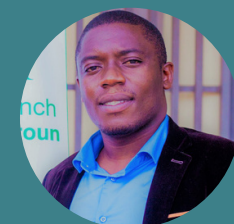
Sara Botero Mesa
GRAPH Course
Coordinator
Project coordinator
University of Geneva



**Sabina Rodriguez
Velásquez**
GRAPH Instructor
Global Health Specialist with special
interest in Infectious Epidemiology



**Camille Beatrice
Valera**
GRAPH Instructor
Project Manager and
Scientific Collaborator,
University of Geneva



Guy Wafeu
GRAPH Instructor
Coordinator at Building Medical
Research in Africa



The GRAPH Courses

www.thegraphcourses.org



GRAPH

OUR PARTNERS



UNIVERSITÉ
DE GENÈVE

EPFL



UNIVERSIDADE FEDERAL
DO RIO DE JANEIRO

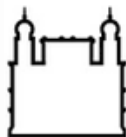


World Health
Organization

ETH zürich



UNIVERSITY OF
OXFORD



FIOCRUZ
Fundação Oswaldo Cruz

FGV EMap
ESCOLA DE
MATEMÁTICA
APLICADA



African Population and
Health Research Center



MedBridge
International



Geneva Digital Health Hub



FGV EMap
ESCOLA DE
MATEMÁTICA
APLICADA



SSPH+
SWISS SCHOOL OF
PUBLIC HEALTH



UNAIDS



PECET
UNIVERSIDAD DE ANTIOQUIA

Programa de Estudio y Control de Enfermedades Tropicales






The GRAPH Courses

 <https://thegraphcourses.org>

 Campus Biotech, Chemin des mines 9, 1202 Geneva

 training@thegraphnetwork.org
olivia.keiser@unige.ch
kenechukwu.nwosu@unige.ch

Designed by: **Marta Rudnicka**